

IP Communication Cable

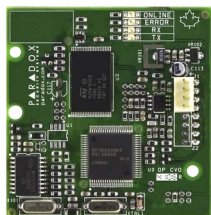


COMCABLE Communication Cable

► Features

- Directly connects the IP150 serial output to the PCS250 / PCS250G, or to the control panel's serial port

Voice Dialer



VDMP3 Voice Communicator

► Features

- Records a "Site ID" to identify the installation site (Requires EVO V2.10 or higher to program and InField software)
- Dials up to 8 telephone numbers to report a burglar, panic or fire alarm using prerecorded messages
- Voice-guided menu
- Arm / Disarm the system remotely via telephone
- Controls PGMs and toggle utility keys remotely via telephone using DTMF
- Connects directly onto the control panel
- In-field upgradeable

► Specifications

Input Voltage	13.8 Vdc, supplied by the VDMP3 port
Current Consumption	35 mA
Audio sample rate	18.345 kHz
Dimensions	6.4 x 6.4 cm (2.5 x 2.5 in.)



IP Internet Module



IP150 IP Communicator

► Features

- Reports control panel events via IP to the Paradox IPR512 GPRS / IP Monitoring Receiver and / or IPRS-7 GPRS / IP PC Receiver Software
- Built-in web interface for easy configuration (requires port forwarding configuration)
- Controls and monitors a control panel through an IP network (LAN / WAN /Internet)
- Views live status of all zones and partitions (e.g., open / close, arm / disarm, troubles and alarms) via web browser
- Arm / Disarm individual partitions via web browser
- Event log on web interface; displays last 64 events
- Sends notification and alarm system events via email
- SSL support for sending secured emails via a secure sockets layer
- HTTPS support for improved security
- Two I/Os on board; controlled via the web interface, triggering an email
- Enables iParadox, NEware, or Babyware to access your system through the Internet
- ParadoxMyHome available for dynamic IP address
- Very low bandwidth consumption
- Built-in clip for mounting in a metal box
- Supports multiple languages

► Specifications

Browser Requirement	Optimized for Internet Explorer 9 or higher, Mozilla Firefox 18 or higher, and Google Chrome, 1024 x 768 resolution minimum
Encryption	AES 256-bit, MD5 and RC4
Input Voltage	13.8 Vdc, supplied by the panel serial port
Current Consumption	100 mA
Dimensions	10.9 x 2.7 x 2.2 cm (4.3 x 1.1 x 0.9 in.)



EN 50131
GRADE 3

EN 50130-5
CLASS II

EN 50136
AIS 5

EN 45011
SYSTEM 5

ANSI/SIA CP-01-2010